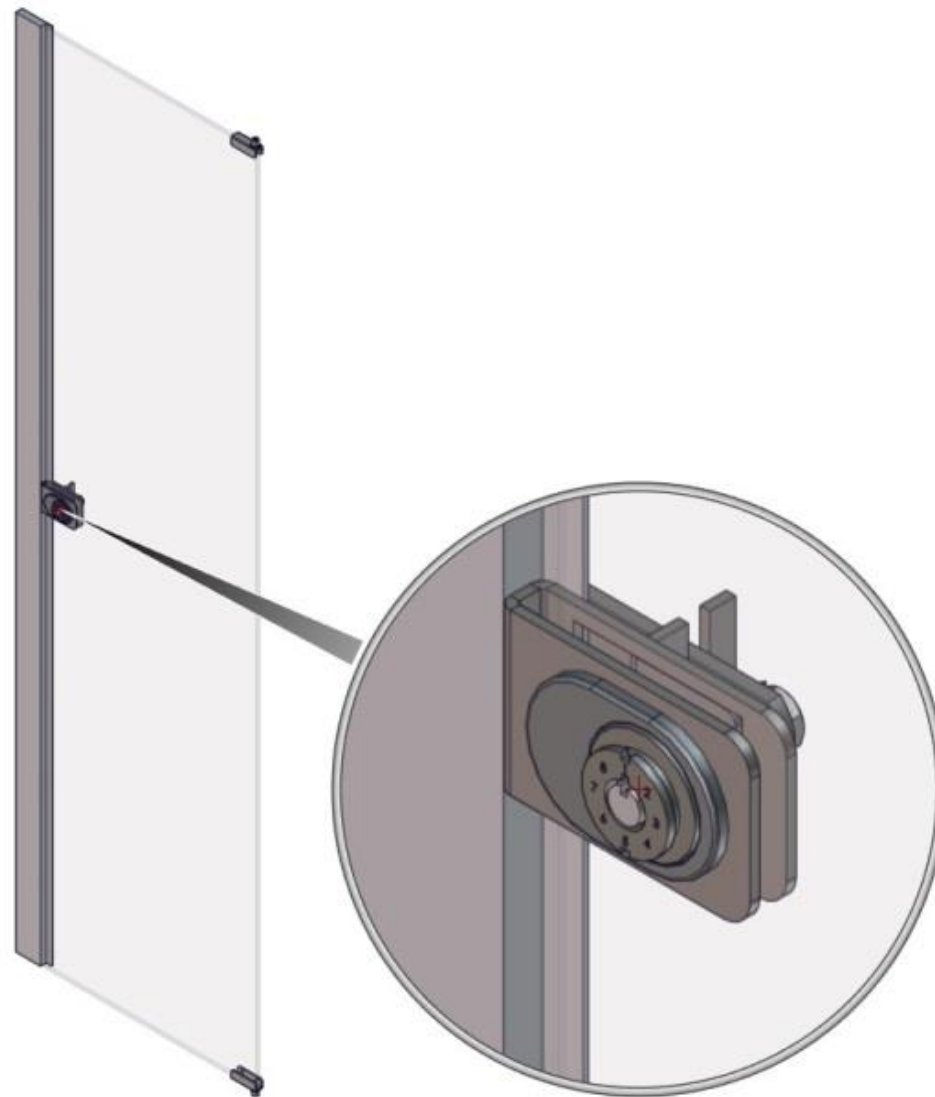
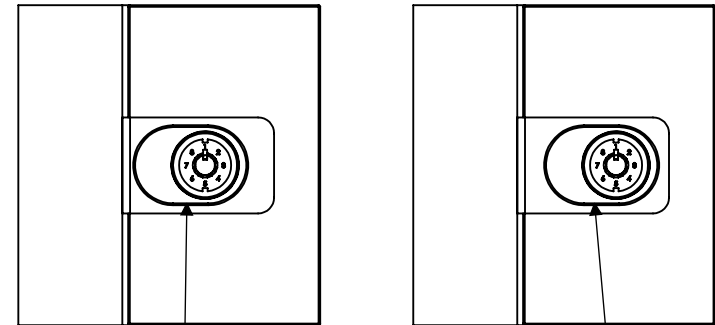
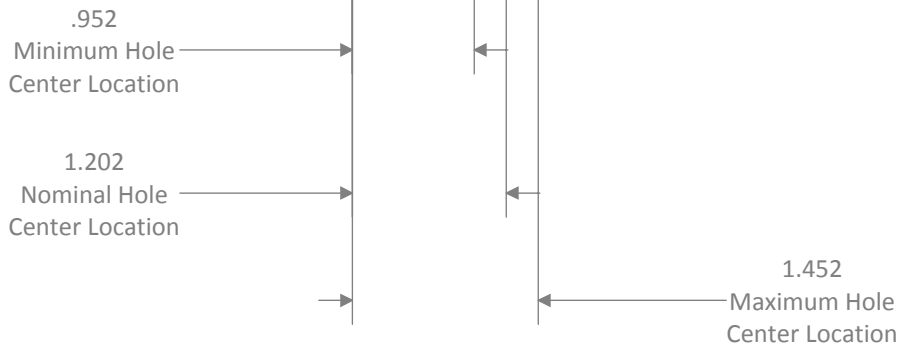
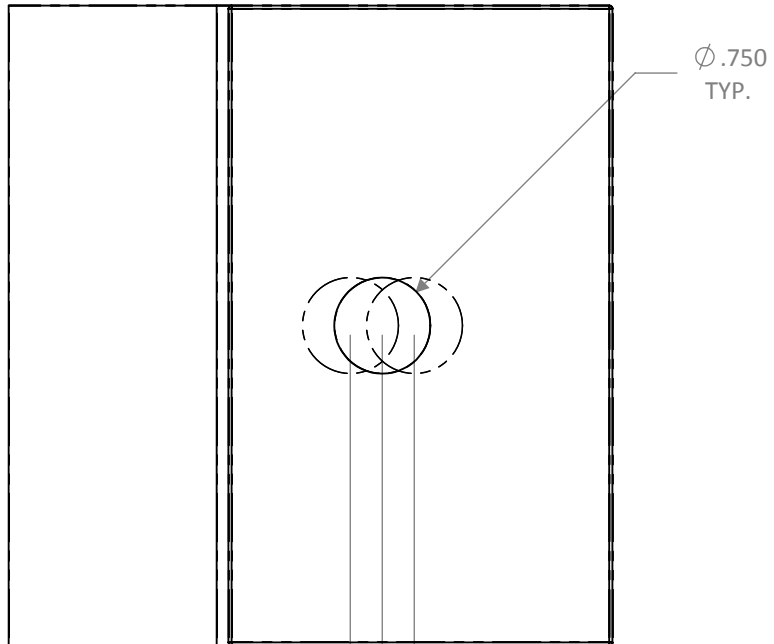


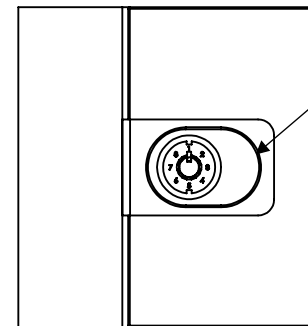
Installation instructions for WM Gun Case Custom Bracket Design



1) First determine the distance from the locking edge of the glass to the center of the installation hole. Using this distance note the orientation of the dress plate on the diagrams to the right.



Note orientation of dress plate for the Nominal Hole center location and in between Nominal Center and Minimum Center.



Note orientation of dress plate for Hole location between Nominal Center and Maximum Center.

2. Slide the bracket over the glass as shown.

3. Note orientation of the cam lock and insert into the dress plate noting the orientation from step #1.

4. Insert cam lock and plate assembly through the bracket and installation hole in the glass.

5. Slide the cam guide over the cam lock and up against the glass.

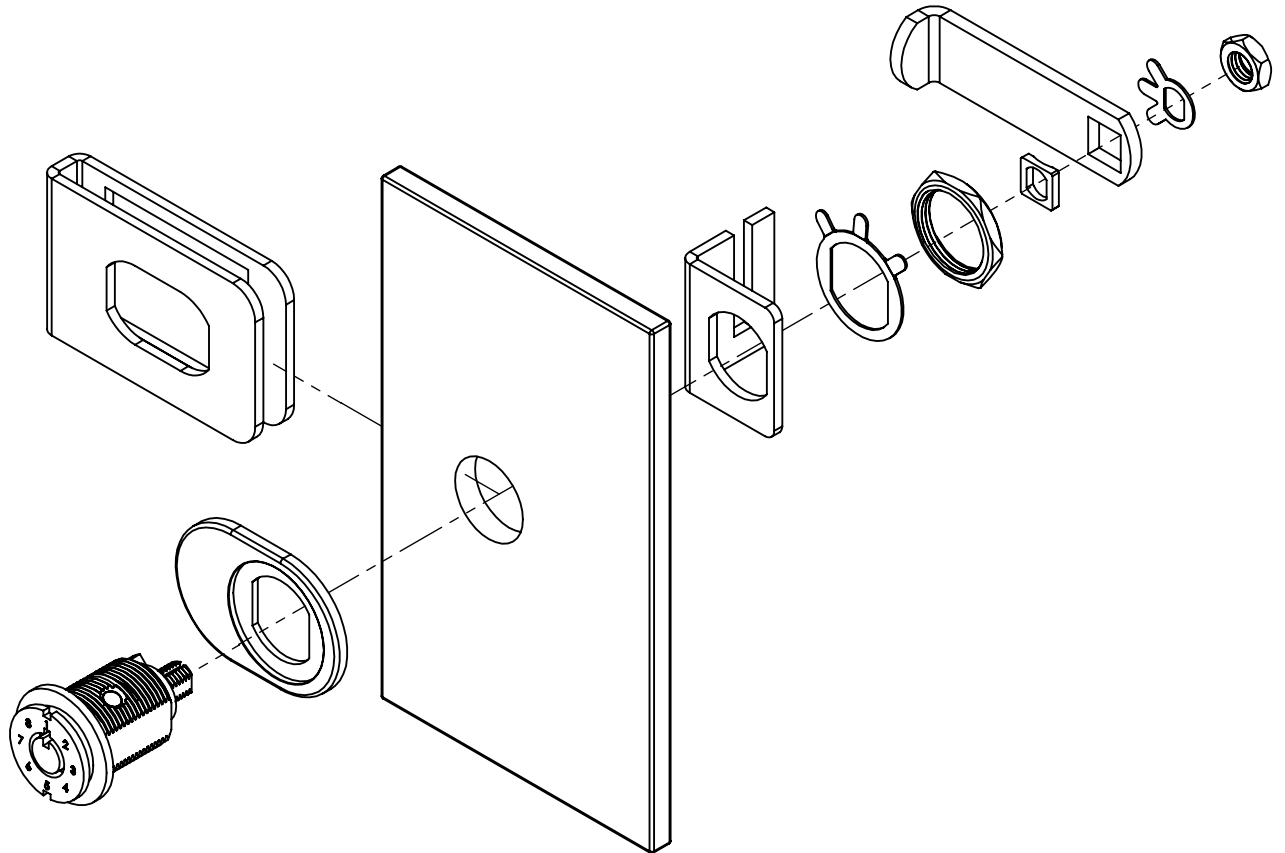
6. Install cam lock by sliding large 3-finger washer over the backend of the cam lock and securing the large hex nut. Once tight fold the tabs of the 3-finger washer down for anti-rotation security.

7. Slide the cam adapter over the threaded cam lock tail.

8. Install the cam. To ease installation the operating key can be used to rotate the lock into the open position.

9. Slide the small 3-finger washer over the cam tail and secure the cam with the small hex nut. Once tight fold the tabs of the small 3-finger washer down for anti-rotation.

10. Test operation with key.



TITLE:		Gun Case Bracket Installation	
SIZE	DWG. NO.	REV	
A	Jahabow WM Gun Case (Hole Location)	A	
SCALE: 2:3	WEIGHT:	SHEET 2 OF 2	

NAME	DATE
AUTHOR: A.MA	09/09/2014
UNLESS OTHERWISE SPECIFIED:	
DIMENSIONS ARE IN INCHES	
TOLERANCES:	
FRACTIONAL ± 1/64	
ANGULAR: ± 1/2° BEND ± 0.01	
TWO PLACE DECIMAL ± .01	
THREE PLACE DECIMAL ± .002	

MATERIAL
FINISH
DO NOT SCALE DRAWING

Kenstan Lock Company

PROPRIETARY AND CONFIDENTIAL
 THE INFORMATION CONTAINED IN THIS DRAWING IS THE SOLE PROPERTY OF KENSTAN LOCK CO. ANY REPRODUCTION IN PART OR AS A WHOLE WITHOUT THE WRITTEN PERMISSION OF KENSTAN LOCK CO. IS PROHIBITED.