

WAL-MART

LOCK

GUIDE

ELECTRONICS DEPARTMENT

WHAT IS GETTING LOCKED UP?

- **Cell Phones**
- **Tablets**
- **Video Games**
- **Wearables (Smart Watches/Fitbits etc.)**
- **GPS**
- **Monster and Beats brand audio**

VIDEO GAMES

- 3ft sliding glass cases with black astragals along the edge to prevent the glass from bending.



- Both cases have holes cut which support a 50 series plunger lock.

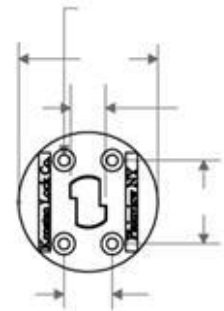
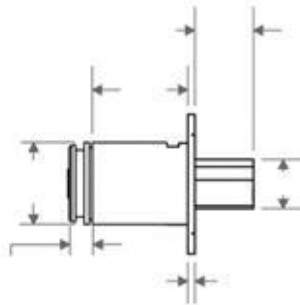
PL-K or K2-50S3PNYY (FM LOCK)

- 6ft sliding glass cases with black astragals along the edge to prevent the glass from bending.



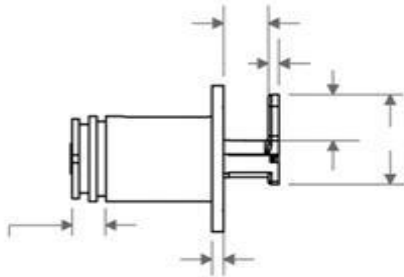
VIDEO GAMES

PL-K or K2-50S3PNYY (FM LOCK)



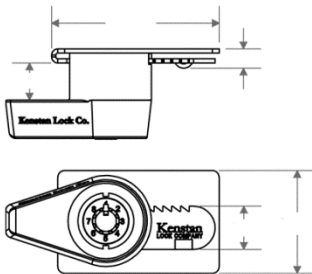
VIDEO GAMES

- “New release end cap” case.
- Also known as video game roll up case.
- Lock has a tear drop shaped tail piece which Rotates 90 degrees to lock the door in place.
- Lock type: *PL-K* or *K2-50L3PNYY(FP Lock)*



BEATS AUDIO CASE

- Sliding Glass door case.
- Ratchet lock keeps the doors from bypassing each other.
- Lock: *RLK260B5PNNYY(CB Lock)*



MONSTER AUDIO CASE

- A Cam lock turns 2 Vertical locking bars which keep 2 swinging doors from opening.
- Case is black with a glass window.

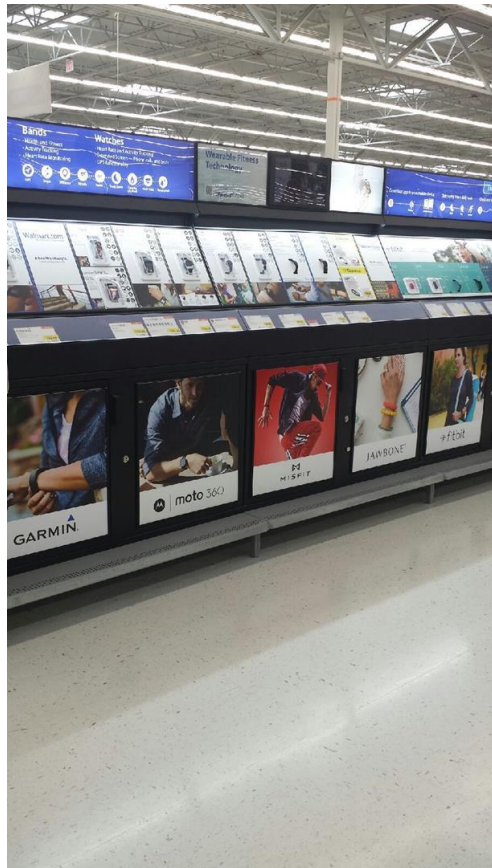


CLK3041203PNYYSL (GX LOCK)

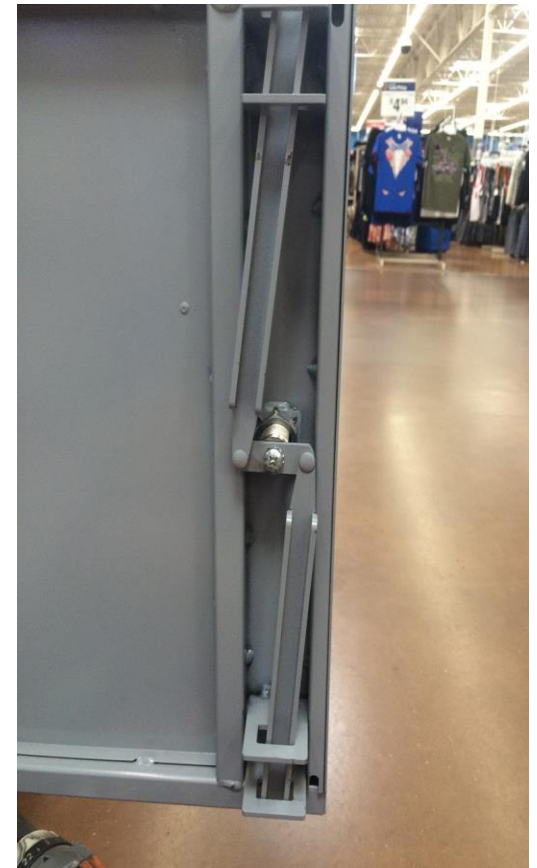


UNIVERSAL SHOWCASES

- Aside from video game cases, these are found in almost every Wal-Mart and are the newest case designs in Electronics.
- A K2 Cam lock turns 2 thick “U Channel” locking bars.
- Cases are metal and either black or gray.
- They often times lock up Smart Watches, Tablets and Laptops.



Part: CLK2041203PNYYMSL(AN
LOCK)



UNIVERSAL SHOWCASES

LAPTOP CASES

- Some universal showcases have swinging black cages on them.
- Lock and set up is the same as on the full metal door cases.



Part: CLK2041203PNYYMSL(AN
LOCK)

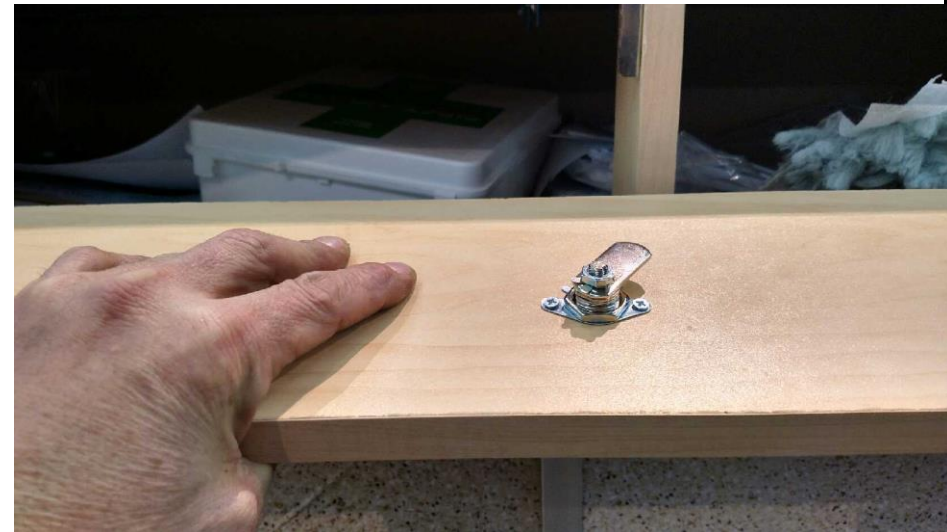
UNIVERSAL SHOWCASES CAMERA BAR

- Modified Universal Showcase are now used in the Camera Bar. Locks still function identically to the tablet/laptop locks.



CONNECTION CENTER WOOD DOORS

- A vast majority of the wood cases in the Connection center, wireless, or racetrack areas will get a 1' 1/8th (04 length) cam lock with a 106 (Standard Length) cam.



CLK3041203PNYYW106(DT LOCK)

CONNECTION CENTER WOOD DOORS

- Some cabinet doors have Diamond Back style draw locks on them.
- While Spring Latch (pictured right) is the most common. Some stores have a snap bolt. (See below)



Spring Latch: DLK/K2(S)3209PNNY (EH LOCK)
Snap Bolt: DLK/K2 (M)36PNNY (EB LOCK)

CONNECTION CENTER SLIDING DOORS

- All sliding doors in electronics have a 2 screw plunger lock which is attached to the metal track (also known as the boot or shoe) and eject open.
- A bolt come out the back to keep 2 slinging doors from bypassing each other.



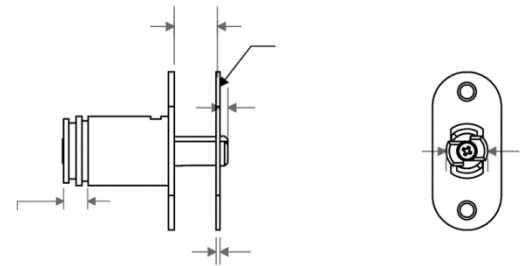
PLK/K2 40S3PNY (FE LOCK)

ELECTRONICS LOCK GUIDE

**OLDER CASES
POSSIBLY
STILL IN SERVICE**

LAPTOP CAGES

- 2 sliding metal grates which are kept in place by an interlocking 2 screw plunger lock.



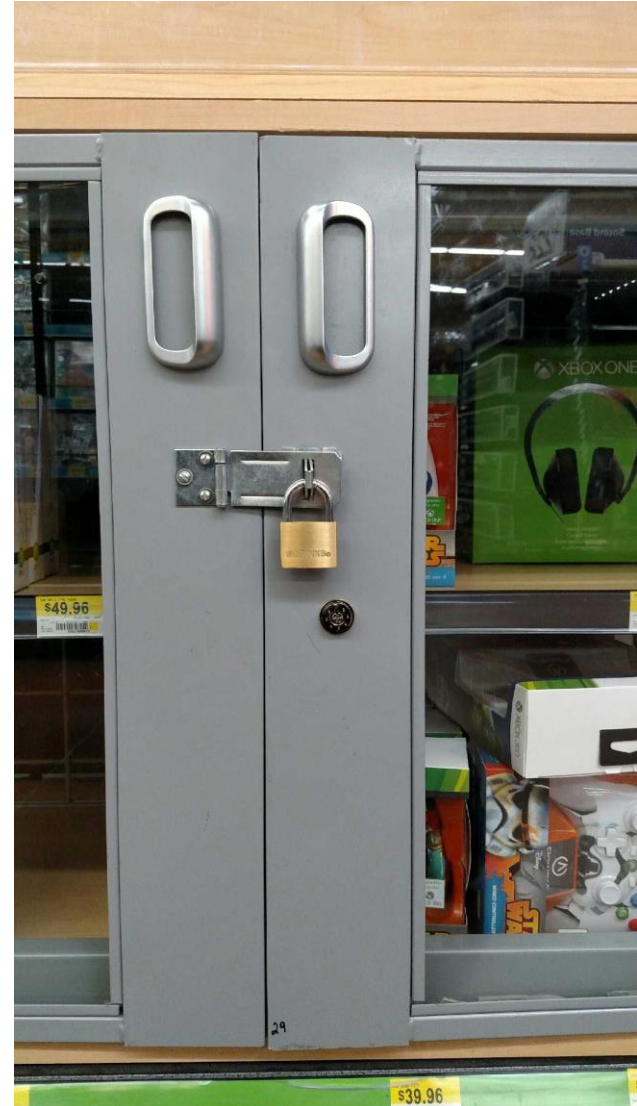
- The T-shaped bolt pushes out of the back of the lock and rotates 90 degrees which lock the 2 doors together.

Part: PLK/K240T3PNYY (FE LOCK)

SWINGING DOOR LAPTOP CASES

- 2 swinging doors with glass windows that are locked via 2 vertical locking bars attached to an 1' ½ (05) cam lock.
- Stores have been known to put hasp locks on any cases with swinging doors. We **DO NOT** service these locks. Only he cam lock attaching to the vertical bars.

Part: CLK3051203PNYSL (DV LOCK)



SPOTTING THE DIFFERENCE BETWEEN K2 & K3

- Lock on the left and is a K2 Lock and the right lock is a K3 Lock.
- K3 was made as a retrofit to Fit into the same Measurements as an original Keymatic locks.
- When looking at the lock already attached to the Cases, watch for the extra ring before the edge.
- This is the result of being able to separate the core of the lock from the housing.



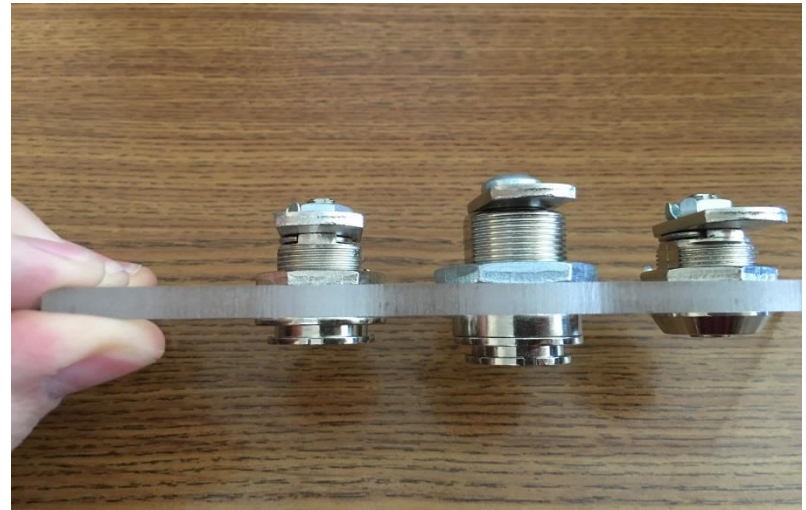
K2



K3

SPOTTING THE DIFFERENCE BETWEEN K2 & K3

- When viewing a lock from the back, a K3 lock will have a post with a nut which is what the cam or locking bars attach to. (Top photo left lock.)
- A K2 lock will have a philips head screw instead. (Top Photo, right lock.)



The difference in barrel sizes between: K3, K2 and original Keymatic locks.