

WAL-MART

LOCK

GUIDE

SPORTING GOODS

WHAT IS GETTING LOCKED UP?

- **Guns**
- **Ammo**
- **Scopes/binoculars**
- **Knives**
- **Archery Supplies**

GUN CASES

- **Gun cases come in two styles. A vast majority of them are sliding glass “inline” cases which require through glass plunger locks similar to the video game cases.**
- **The other is a spinning carousel case which is a K3 Cam lock with a specially designed bracket which adds added security and a hefty special L-Cam.**
- **When Keying Gun cases, we traditionally start it on the No. 5 setting of the Sporting Goods key code and give them a purple color. This is meant to prevent someone being able to steal the keys and open Guns and Ammo on the same key.**

GUN CASES INLINE CASES

- The inline cases are found behind the counter.
- Traditionally the top of the cases hold the guns and the bottom hold ammo. Both take a through glass plunger lock.

PL-K or K2-50S3PNYY (FM LOCK)



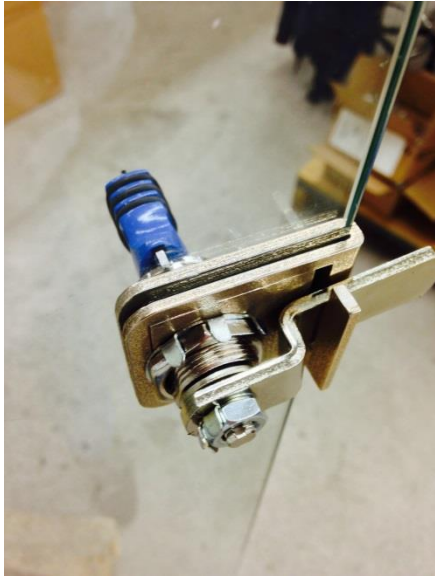
GUN CASES CAROUSEL



- **Gun Carousel Cases are large hexagonal glass cases with a traditional hinged door on one side.**
- **To keep this secure, a special bracket was developed which secures the case in place and prevent tampering or manipulation of the lock.**

CLK3030912PNYXXGC (HE LOCK)

GUN CASE CAROUSEL



- The new ATF approved bracket supports far sturdier material and minimizes tampering.
- It features a tail piece support built into the bracket and the updated model as a specially designed L Cam on it as well.

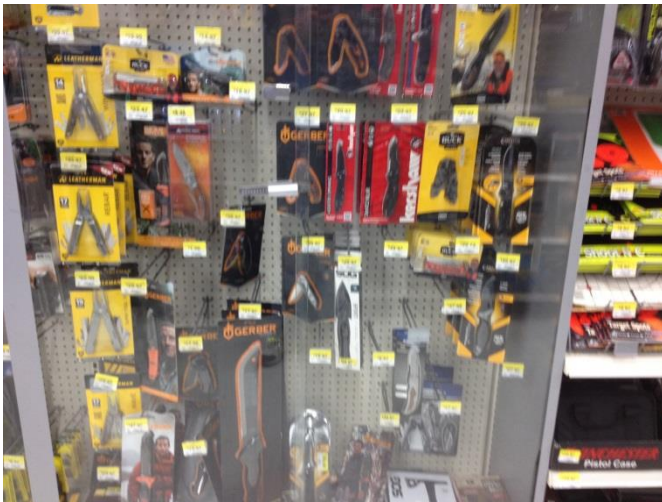


KNIFE CASE



- Sporting Goods knife cases come in 2 varieties usually.
- The showcase which has knives on display and has a sliding door for access.

PLK240S3PNYY (FE lock)



- The other case it can be are large bypassing glass doors-normally without holes for plunger locks.
- A B5 ratchet lock is the most common lock we will put on these cases. However, a B1 or B2 if requested will also do the job well.

RLK260B5PNNY (CB Lock)

AMMO CASES

- Ammo cases can come in any one of three styles and each requires a different lock.
 - In Line cases (as seen to the right) which requires a 50 series plunger lock.



PLK250S3PNYY (FM LOCK)

- Bypassing glass doors
Similar to the knife cases
Are also used and can take
A B5, B1 or B2 ratchet lock
As requested either by the store or the locksmith.



RLK260B5PNNY (CB Lock)

- Finally and very rarely, the 40 Series plunger could be required to secure ammo cases.

PLK240S3PNYY (FE lock)

CABINET/DRAWER CASES

- Much like in Electronics and Jewelry, Sporting Goods has Drawer and Cabinet cases. Usually with Spring Bolt Draw locks.
- Although it is rare, much like Electronics, the drawer locks could be substituted with 1 1/8th long cam locks.



DLK2S3209PNNY (EH LOCK)

CLK304 1203PNYW106 (DT LOCK)